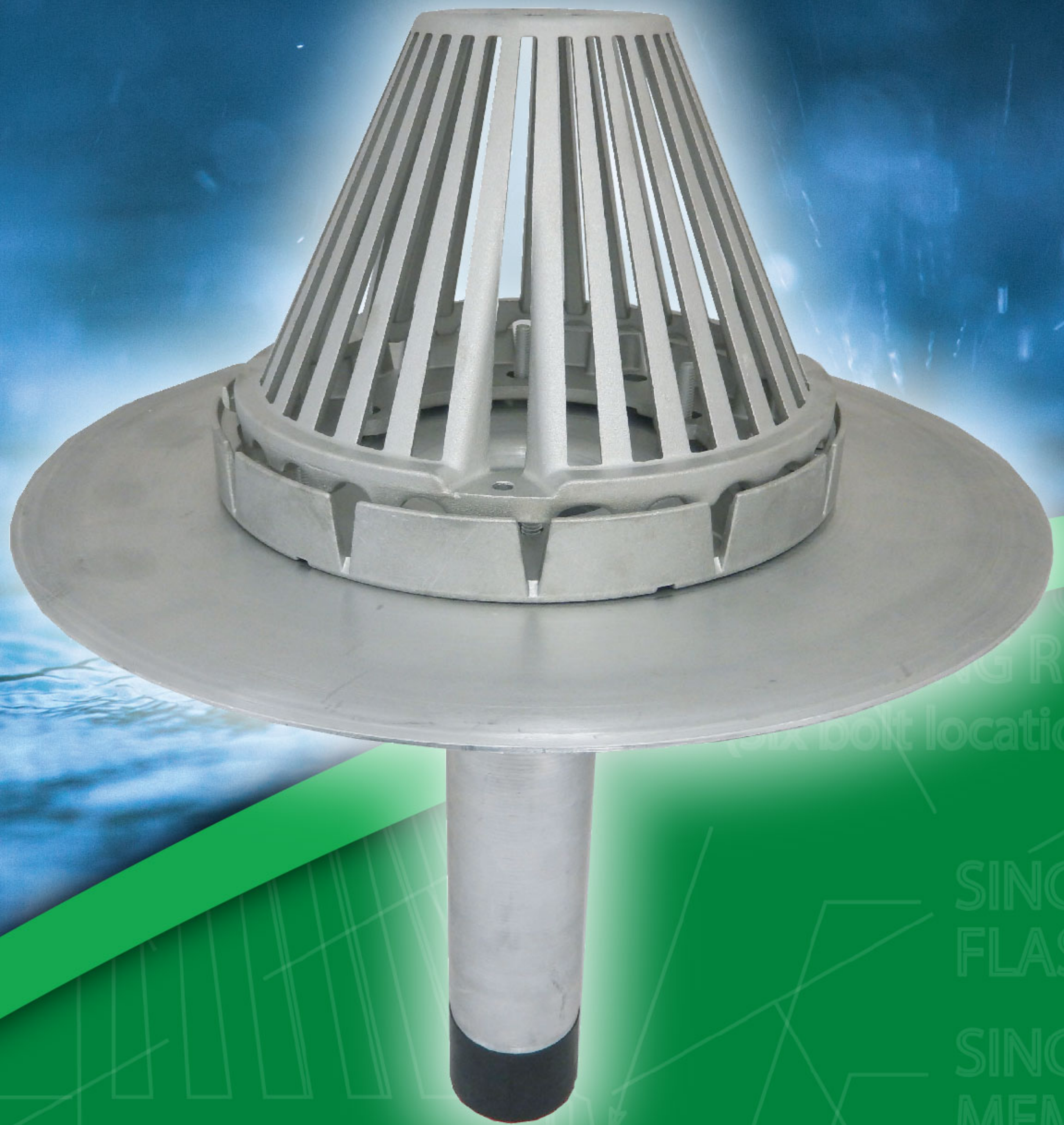


TRUFAST

Proven Performance in
Extreme Conditions

ALUMINATOR RETROFIT DRAIN



**INNOVATIVE &
IMPROVED!**



ALL ALUMINUM RETROFIT DRAIN

- Innovative & Improved Dome & Ring Castings
- Available in PVC & TPO Coatings
- Improved Packaging - Bulk or Individually Packed Options



SINCE 1823

ALTENLOH, BRINCK & CO. U.S., INC.

trufast.com | P 800.443.9602 | F 419.633.1048

Form No. TF-1015



- Innovative & Improved Dome & Ring Castings
- Available in PVC & TPO Coatings
- Improved Packaging - Bulk or Individually Packed Options



ProSeal Seal

FEATURES

- All Aluminum Retrofit Drain with Aluminum Body
- Constructed of Heavy Duty Spun Aluminum .081 Gauge for Quick & Easy Installation
- Heavy Duty Aluminum Ring that is 1-1/4" Tall 12 Scallops to Maximize Drainage Seep Holes on Bottom of Ring & Bolt in Place 3 Bolt Aluminum Strainer that is 10" Diameter x 6" Tall)
- Standard with ProSeal Rubber Seal

- Larger Stud Diameter for Increased Strength of Hardware
- Available in Sizes of 3", 4", 5" & 6"
- Includes Strong Mechanical Seal that Prevents Water Back-up Issues
- Flange Diameter 16"
- Drain Outlet Length 12"



OPTIONS/ACCESSORIES

OVERFLOW

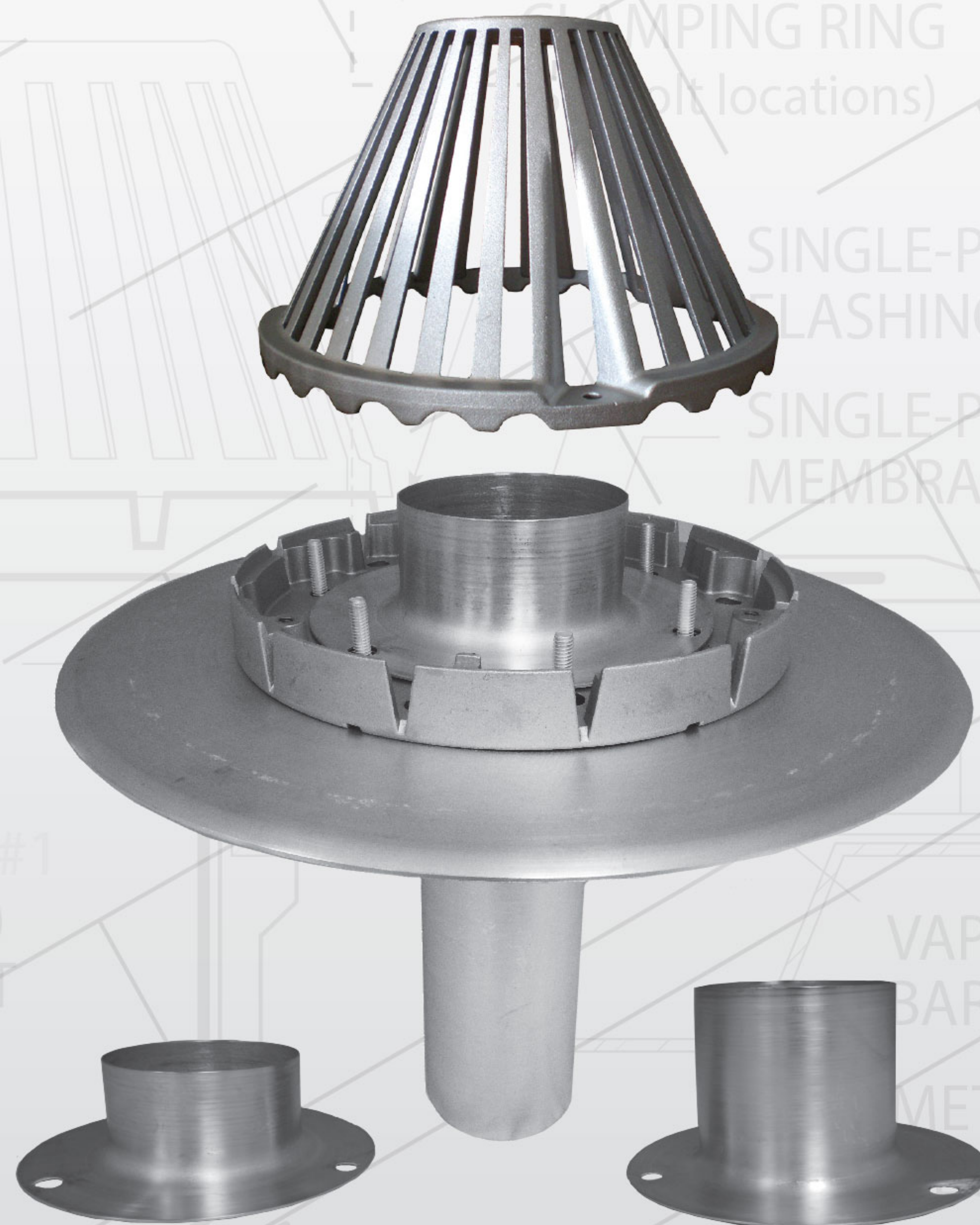
Trufast's Overflow option is a spun aluminum attachment that is designed to use with all of our aluminum drains with clamping ring. It provides additional drainage when water levels exceeds 2 inches (also available in 4 inches).

2" LOW PROFILE ALUMINUM STRAINER



PVC/TPO COATINGS

Our Aluminator Flange has the option to be PVC or TPO Coated for direct hot air welding of PVC and TPO type roofing membranes.



2" HIGH OVERFLOW

4" HIGH OVERFLOW

Aluminator/ProSeal Seal & Flow Capacity

A common question to retrofit roof drain performance is the ability of the drain to handle a certain volume of water in a specified period of time. Typical measurements are Gallons Per Minute (GPM). Many characteristics of a drain can have both positive and negative effects on performance results and also drainpipe diameter factors to the actual performance. Combined with local rainfall charts and square footage of the area to be drained, accurate gallons per minute (GPM) data is crucial.

The chart to the right reflects test results of our Aluminator and ProSeal Drains.

Size	GPM
3"	45
4"	85
5"	180
6"	210

Above drains were able to perform at the peak rates with a head of water of 3-1/4" or less.

THE CHART BELOW SHOWS OUR SEAL EXPANSION CAPACITIES FOR OUR ALUMINATOR & PROSEAL DRAINS

Drain Size	OD of Pre-Expanded Seal	Fits into Pipe ID	Fully Expanded Seal
3"	2.86"	2-7/8" – 3-1/4"	3.40"
4"	3.74"	3-7/8" – 4-1/4"	4.40"
5"	4.73"	4-7/8" – 5-1/4"	5.40"
6"	5.75"	5-7/8" – 6-1/4"	6.40"

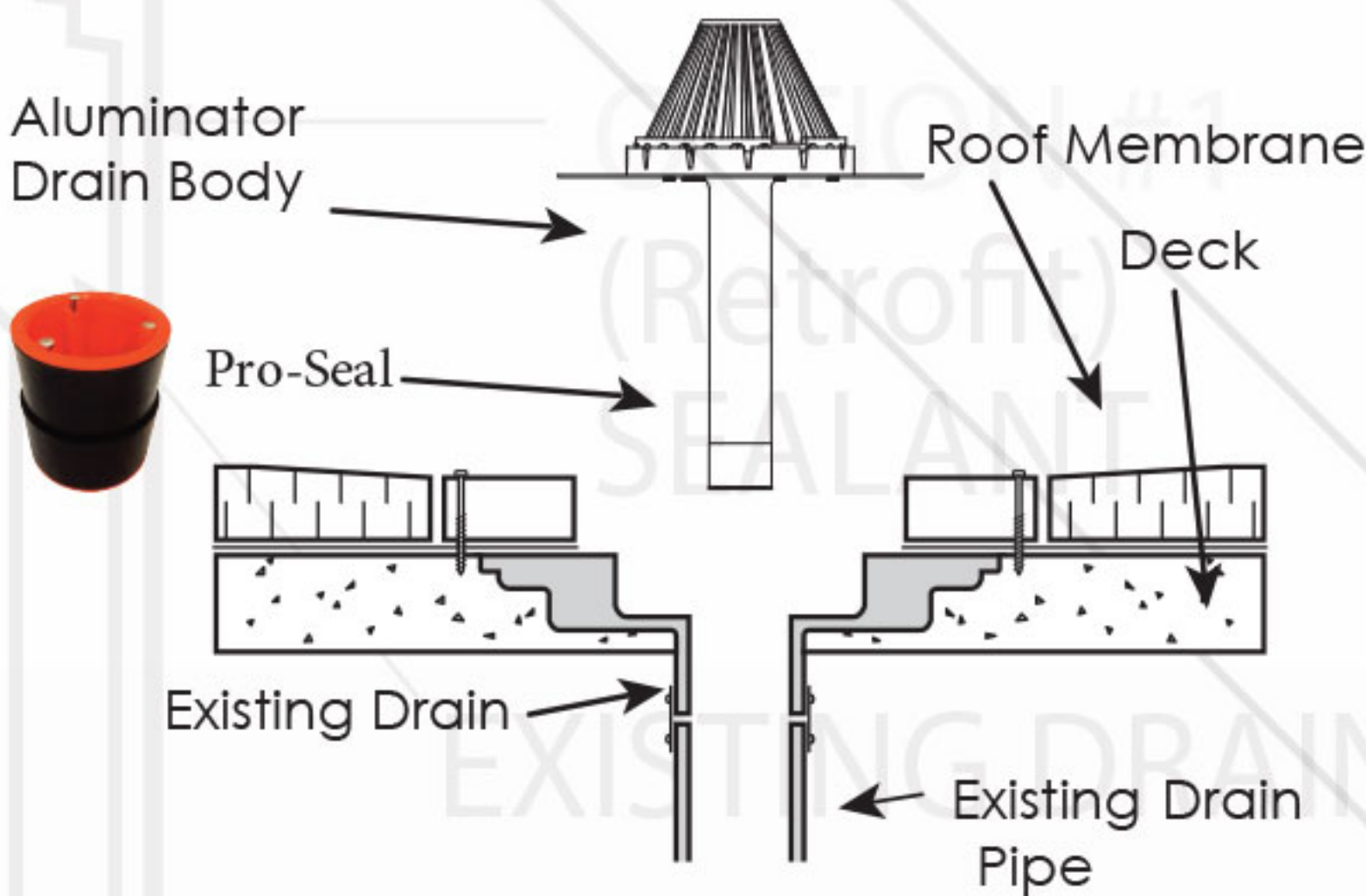
Due to variations in manufacturing and job site inconsistencies the above data are guidelines only and are not guaranteed for any specific situations.

Aluminator Retrofit Drain Installation Instructions



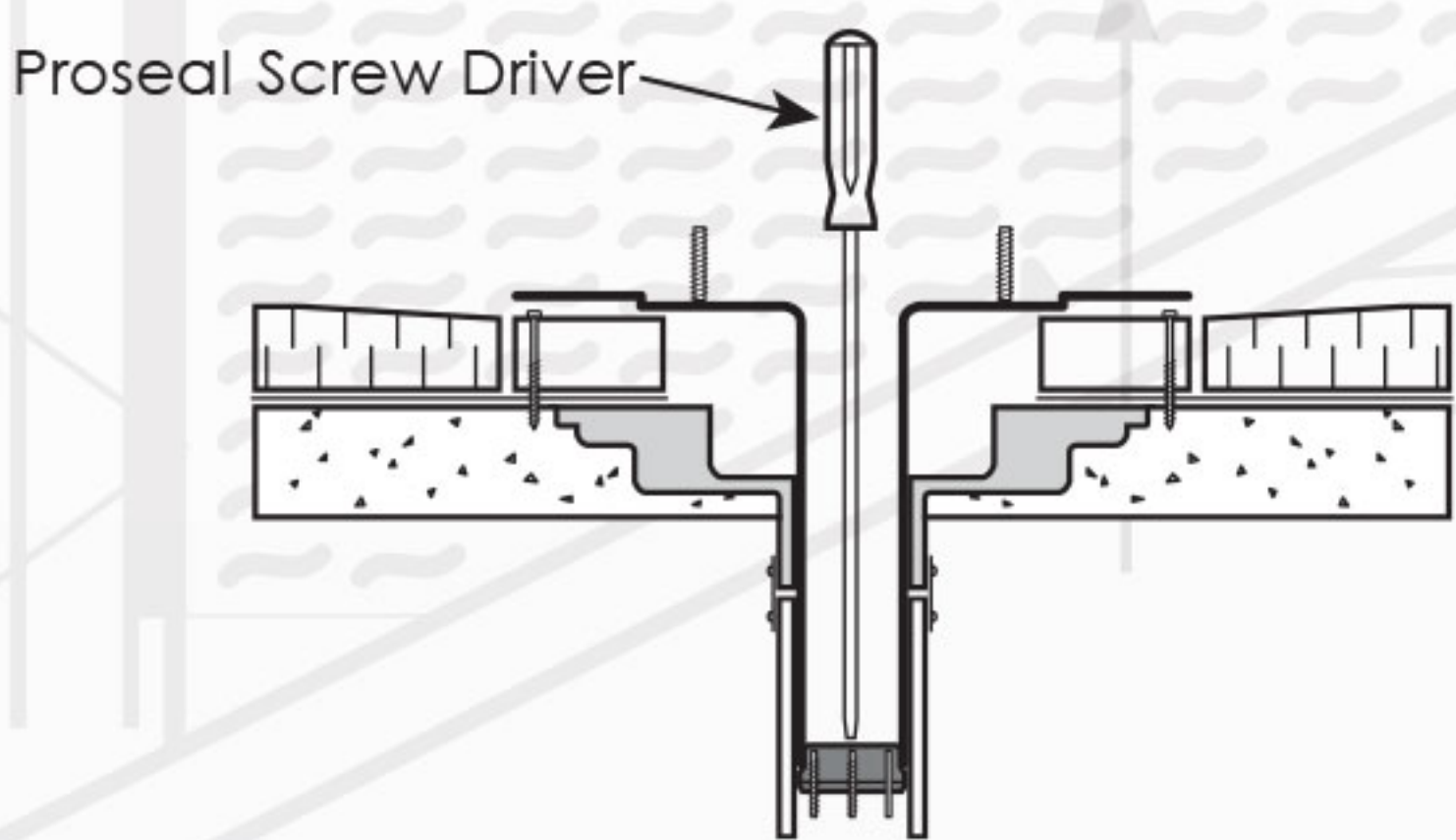
For Use With: All types of roofing materials
Job Preparation: Remove existing Strainer and Clamping Ring. Remove any other existing drain components as required to enable our Aluminator Drain flange to lie flush on roof membrane. Remove any debris in the existing drain pipe that interferes with proper installation.

#1



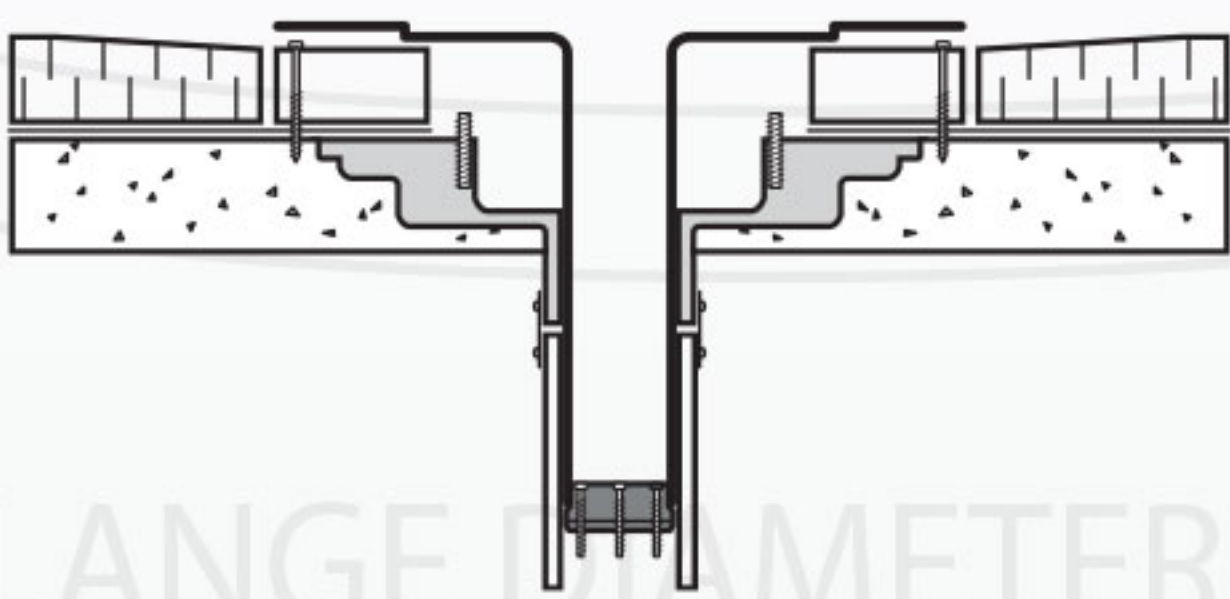
Inspect the existing drain pipe to make sure there are no elbows that prevent the drain stem from being fully inserted into the pipe. If an elbow is present, follow directions on back page to shorten our Aluminator Drain length. Insert Pro-Seal into end of drain stem and tighten screws enough to hold the seal in place during installation. Insert assembled Aluminator Drain into existing drain pipe until flange is flush on roof membrane.

#2



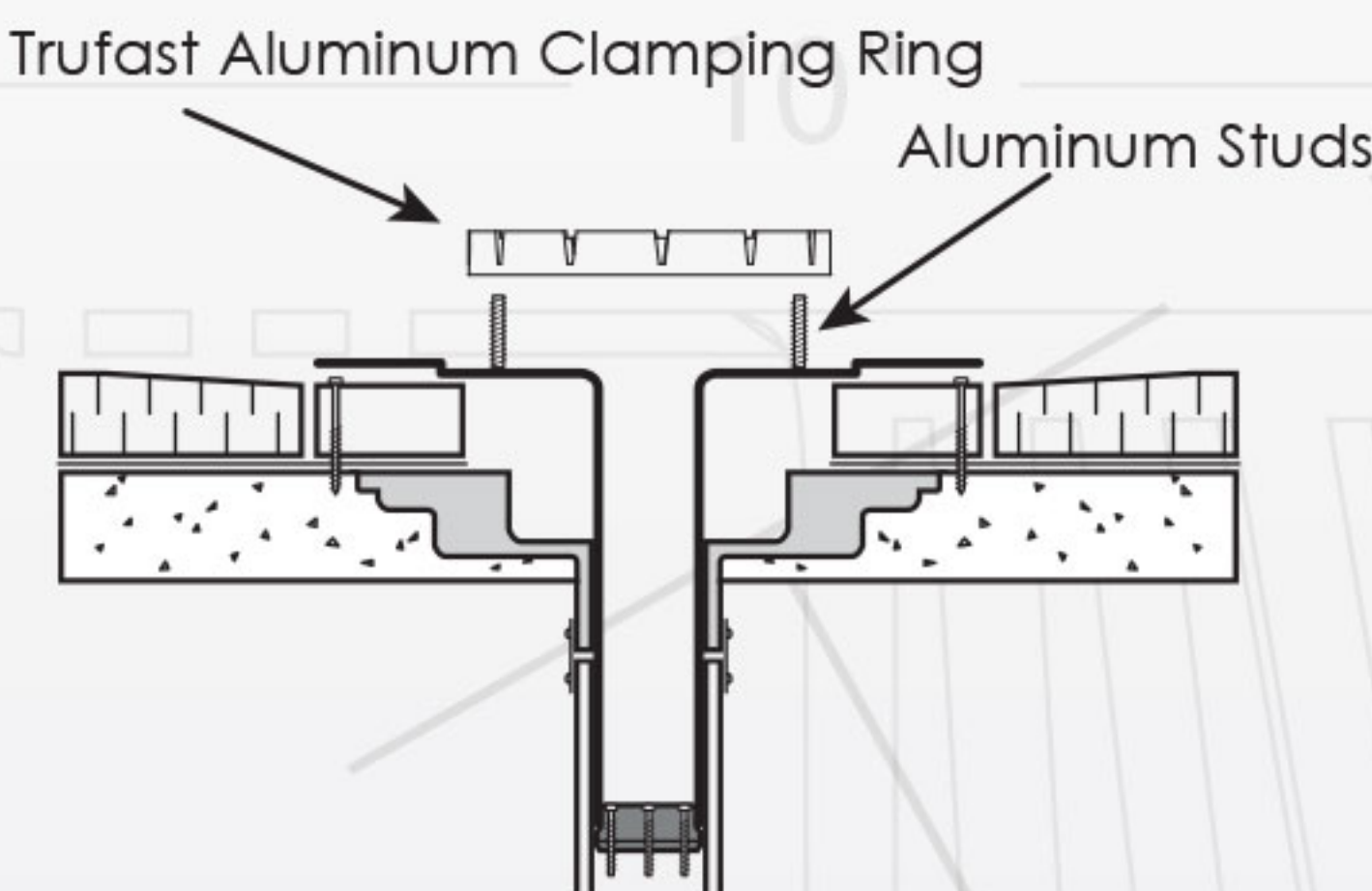
Alternately tighten seal compression ring screws with Pro-Seal Screw driver until hand tight. Aluminator Drain body is correctly installed when pressure placed on drain body results in no vertical movement. Do not overtighten the screws.

#3



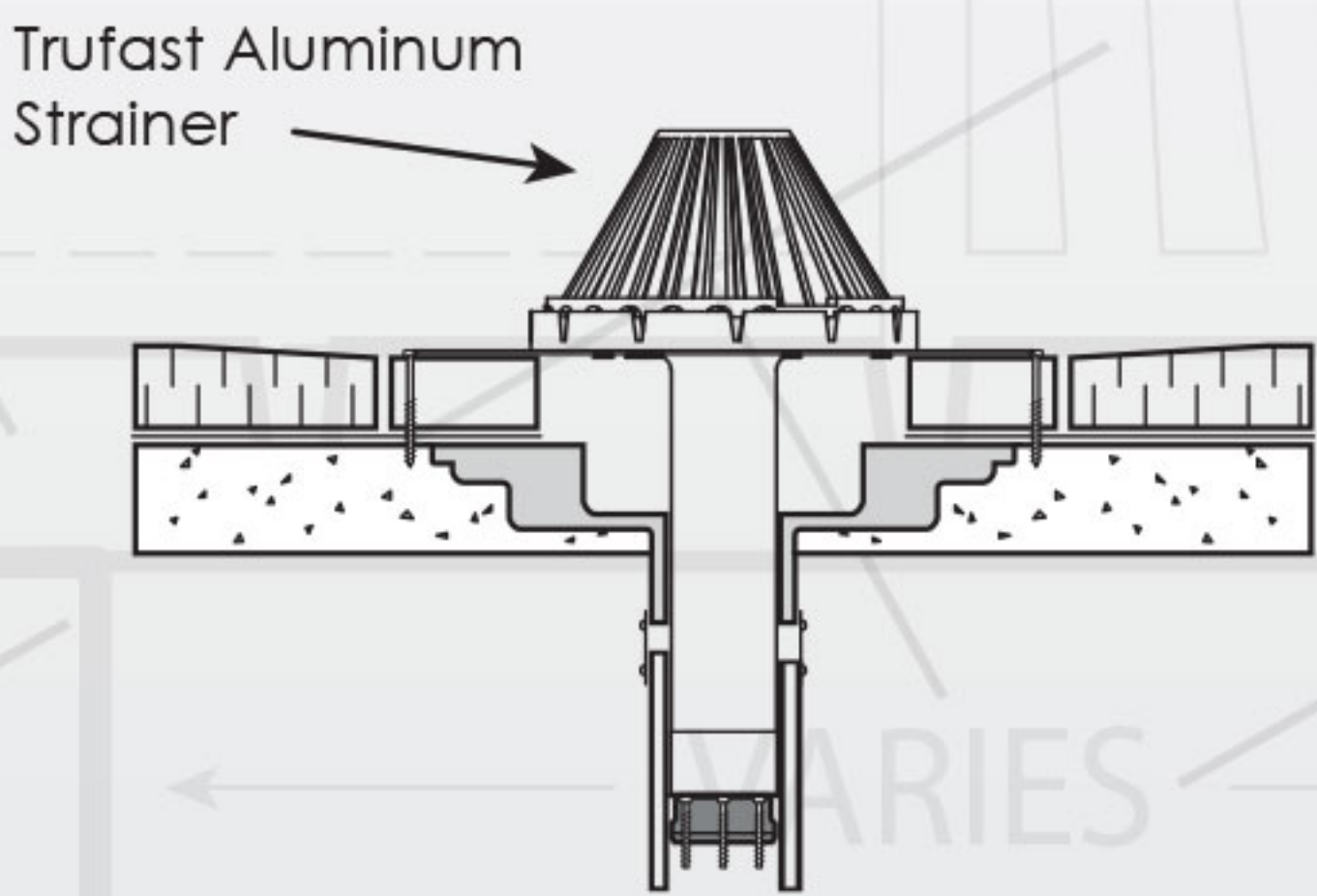
Secure the drain flange to the roof deck using a minimum of three fasteners that are evenly spaced around the flange. The flashing membrane must cover and extend past the fastener head. Flashing membrane must be installed per manufacturer's specifications.

#4



Place Trufast's Aluminum Clamping Ring over metal studs and install supplied stainless steel nuts and washers. Tighten clamping ring against membrane flashing until secure. Do not over tighten as the possibility of the ring or studs could be damaged.

#5



Install Trufast's Aluminum Strainer by aligning screw holes with the holes in the clamping ring. Secure with screws provided.

HOW TO SHORTEN OUR ALUMINATOR DRAIN

You may need to shorten our Aluminator outlet length if the existing vertical distance is too shallow to accommodate our standard 12" long



The minimum length of our Aluminator Retrofit Drain stem with our Pro-Seal

#1

Make sure there is at least 4-inches of distance in the existing pipe to accommodate our Aluminator Drain. Cut drain stem to desired length and insert Pro-Seal. Note: Leave at least 2.5-inches of the drain stem to accommodate the seal. See below.

#2

Insert the Pro-Seal in the cut drain stem and tighten the seal screws. Once the drain and seal have been assembled, insert it into the existing water leader and complete the assembly following 2 - 5 installation on front page (see reverse).