

# TRUFAST® ALUMINUM RETROFIT ROOF DRAINS



## FEATURES

- › A retrofit insert aluminum drain.
- › Constructed of heavy gauge spun aluminum.
- › Seals securely within existing pipe.
- › Prevents water back-up problems by sealing side wall gaps with expandable waterproof tape.
- › Simple and quick to install.

## ALUMINUM DRAINS

TRUFAST aluminum drains feature a 2" (51mm)-wide band of high density, expanding foam tape impregnated with asphalt that is factory applied in a compressed state around the drain outlet.

Sealant tape is designed to expand to approximately four times its compressed thickness. Just prior to inserting the drain, the installer removes the exterior compression tape and immediately sets the retrofit drain in place. The released tape gradually expands to fill the space between the TRUFAST drain and the existing drain sleeve, making the connection watertight.

TRUFAST sealant tape expands more slowly in cold temperatures. When heat is applied to the inside of the outlet, the sealant tape expands more rapidly. Should the tape expand too much before inserting the TRUFAST drain, simply recompress the tape by hand and then insert the drain.

## SPECIFICATIONS

PART #	SIZE	DESCRIPTION
RD-3000-AL	3"	ALUMINUM DRAIN W/ CR
RD-4000-AL	4"	ALUMINUM DRAIN W/ CR
RD-6000-AL	6"	ALUMINUM DRAIN W/ CR
<b>UPGRADES</b>		
RD-10000-CI-S	10"	CAST IRON STRAINER
RD-10000-CI-SCR	10"	CAST IRON STRAINER/CR
RD-10000-AL-SCR	10"	HD ALUMINUM STRAINER/CR

## INSTALLATION

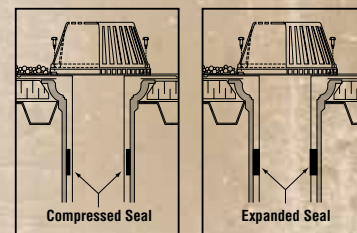
**STEP 1:** Inspect the old drain for possible cracks and for a smooth, clean surface. Scrape away old asphalt and dirt. Use a heat gun to soften old asphalt and to achieve a relatively dry surface, if necessary.

**STEP 2:** Test the size of the new TRUFAST aluminum drain by inserting it into the now clean original drain before removing the compression tape. With the correct size confirmed, remove the drain, release the compression tape and promptly re-insert the TRUFAST drain. The tape gradually expands to fill the space surrounding the outlet of the new drain, thereby creating the back-up seal feature.

**STEP 3:** Flash in the drain flange according to methods determined by the membrane manufacturer and/or the roofer using the clamping ring (CR), if applicable. Attach the strainer dome.

## DRAIN SEAL

TRUFAST aluminum drains are an economical answer to potential water back-up problems. They are designed to fit neatly into old existing drains in a retrofit application.



TRUFAST® roofing solutions are manufactured under stringent engineering, quality, and environmental standards at the ALTENLOH, BRINCK & CO. U.S., INC. complex in Bryan, OH.  
ISO 9001:2008 certified.



# TRUFAST® COPPER RETROFIT ROOF DRAINS

100%  
AMERICAN MADE



## FEATURES

- › A retrofit insert copper drain.
- › Seals securely within existing pipe.
- › Prevents water back-up problems by sealing side wall gaps with expandable waterproof tape.
- › Simple and quick to install.
- › Copper for a reliable, long life.

TRUFAST® roofing solutions are manufactured under stringent engineering, quality, and environmental standards at the ALTENLOH, BRINCK & CO. U.S., INC. complex in Bryan, OH.  
ISO 9001:2008 certified.

 ALTENLOH, BRINCK & CO. U.S., INC.

## COPPER DRAINS

TRUFAST copper drains feature a 2" (51mm)-wide band of high density, expanding foam tape impregnated with asphalt that is factory applied in a compressed state around the drain outlet.

Sealant tape is designed to expand to approximately four times its compressed thickness. Just prior to inserting the drain, the installer removes the exterior compression tape and immediately sets the retrofit drain in place. The released tape gradually expands to fill the space between the TRUFAST drain and the existing drain sleeve, making the connection watertight.

TRUFAST sealant tape expands more slowly in cold temperatures. When heat is applied to the inside of the outlet, the sealant tape expands more rapidly. Should the tape expand too much before inserting the TRUFAST drain, simply recompress the tape by hand and then insert the drain.

## SPECIFICATIONS

PART #	SIZE	DESCRIPTION
RD-3000-CU	3"	COPPER DRAIN W/ CR
RD-4000-CU	4"	COPPER DRAIN W/ CR
RD-6000-CU	6"	COPPER DRAIN W/ CR
<b>UPGRADES</b>		
RD-10000-CI-S	10"	CAST IRON STRAINER
RD-10000-CI-SCR	10"	CAST IRON STRAINER/CR
RD-10000-AL-SCR	10"	HD ALUMINUM STRAINER/CR

## INSTALLATION

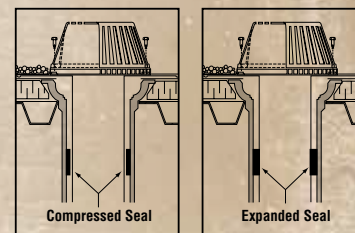
**STEP 1:** Inspect the old drain for possible cracks and for a smooth, clean surface. Scrape away old asphalt and dirt. Use a heat gun to soften old asphalt and to achieve a relatively dry surface, if necessary.

**STEP 2:** Test the size of the new TRUFAST copper drain by inserting it into the now clean original drain before removing the compression tape. With the correct size confirmed, remove the drain, release the compression tape and promptly re-insert the TRUFAST drain. The tape gradually expands to fill the space surrounding the outlet of the new drain, thereby creating the back-up seal feature.

**STEP 3:** Flash in the drain flange according to methods determined by the membrane manufacturer and/or the roofer using the clamping ring (CR), if applicable. Attach the strainer dome.

## DRAIN SEAL

TRUFAST copper drains are an economical answer to potential water back-up problems. They are designed to fit neatly into old existing drains in a retrofit application.



**TRUFAST**

800-443-9602 TRUFAST.COM





# TRUFAST® PVC NEW INSTALLATION ROOF DRAINS

## PVC DRAIN KIT

A TRUFAST PVC assembly provides all the components for easy installation. It offers the essential features of more expensive drains at an affordable price. It is adaptable to most generic materials of single-ply and conventional built-up roofing, for use with roof decks of steel, wood, precast concrete or gypsum. This drain offers versatility and easy installation on new and existing roofs.

## SPECIFICATIONS

PART #	SIZE	DESCRIPTION
RD-3000-PVC	3"	PVC DRAIN KIT
RD-4000-PVC	4"	PVC DRAIN KIT
RD-6000-PVC	6"	PVC DRAIN KIT
<b>UPGRADES</b>		
RD-10000-CI-S	10"	CAST IRON STRAINER
RD-10000-AL-S	10"	ALUMINUM STRAINER
RD-12000-CI-S	12"	CAST IRON STRAINER

## FEATURES

- › Molded polyethylene dome strainer. Bolts securely to clamping ring.
- › Injection molded PVC or ABS body. Ultraviolet stabilized for long life. Solvent welds to PVC or ABS DWV pipe.
- › Epoxy-coated aluminum clamping collar with gravel stop. Grooved for positive drainage on smooth surfaced roofs. Distortion resistant and unbreakable.
- › Aluminum underdeck clamp fastens drain securely to deck.
- › Flexible expansion coupling connects to PVC, ABS or cast iron pipe.



## INSTALLATION

### STEP 1: FLASHING ATTACHMENT

Install single-ply membrane, soft copper, lead or BUR felt flashing between clamping ring and drain flange.

### STEP 2: PVC 4" (102MM) CONNECTOR

When joining ABS and PVC plastic together, the use of an all-purpose cement is required. Under all conditions, proper drying of PVC connector to drain is required before attaching the coupling.

### STEP 3: ACCESSORY TIGHTENING PROCEDURE

Use a maximum of 60 lbs. of torque to tighten coupling bands, and use care when securing clamping ring and underdeck clamp. Excessive tightening not required.

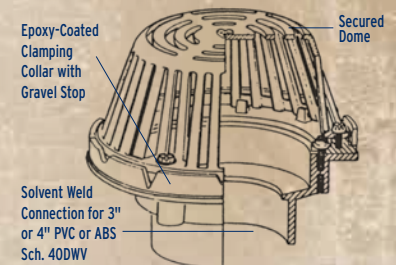
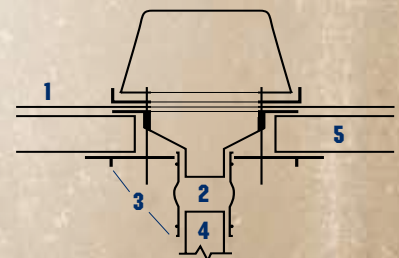
### STEP 4: COUPLING HOOK-UP

Will attach to Schedule 40 DWV plastic or No-Hub cast iron drain line.

### STEP 5: SPECIAL NOTE

Wet or damaged insulation, or insulation with low compressive strength, should be removed around drain flange seating area and replaced with insulation having a minimum compressive value of 25 PSI. This rating or higher should apply to all of the above roofing conditions. Drain should have insulation tapered to it, allowing complete drainage through weep holes of clamp device.

May be used with all BUR and single-ply systems. Compatibility of single-ply membranes, or bonding adhesives with PVC and ABS plastics should be determined by the membrane manufacturer and end user.



TRUFAST® roofing solutions are manufactured under stringent engineering, quality, and environmental standards at the ALTENLOH, BRINCK & CO. U.S., INC. complex in Bryan, OH. ISO 9001:2008 certified.





# TRUFAST® CAST IRON NEW INSTALLATION ROOF DRAINS

## FEATURES

- › Molded polyethylene dome strainer. Bolts securely to clamping ring.
- › Epoxy-coated cast iron body. No hub outlet.
- › Epoxy-coated aluminum clamping ring with gravel stop. Grooved for positive drainage on smooth surfaced roofs. Distortion-resistant and unbreakable.
- › Aluminum underdeck clamp. Fastens drain securely to deck.
- › Flexible expansion coupling. Connects to PVC, ABS or cast iron pipe.



## CAST IRON DRAIN KIT

The new TRUFAST cast iron assembly drain provides the essential features of more expensive cast iron drains at an affordable price. It is adaptable to most generic materials of single-ply and conventional built-up roofing, for use with roof decks of steel, wood, precast concrete or gypsum. This drain offers versatility and easy installation on new and existing roofs.

## SPECIFICATIONS

PART #	SIZE	DESCRIPTION
RD-3000-CI	3"	CAST IRON DRAIN KIT
RD-4000-CI	4"	CAST IRON DRAIN KIT
RD-6000-CI	6"	CAST IRON DRAIN KIT
<b>UPGRADES</b>		
RD-10000-CI-S	10"	CAST IRON STRAINER
RD-10000-AL-S	10"	ALUMINUM STRAINER
RD-12000-CI-S	12"	CAST IRON STRAINER

## INSTALLATION

### STEP 1: FLASHING ATTACHMENT

Install single-ply membrane, soft copper, lead or BUR felt flashing between clamping ring and drain flange.

### STEP 2: COUPLING HOOK-UP

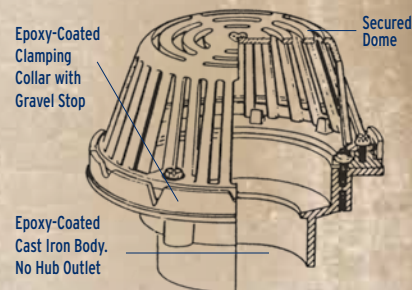
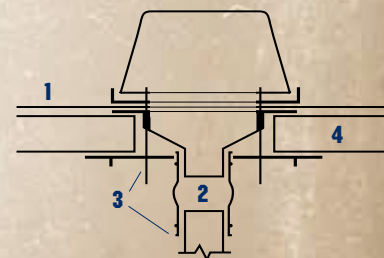
Will attach to Schedule 40 DWV plastic or No-Hub cast iron drain line.

### STEP 3: ACCESSORY TIGHTENING PROCEDURE

Use a maximum of 60 lbs. of torque to tighten coupling bands, and use care when securing clamping ring and underdeck clamp. Excessive tightening not required.

### STEP 3: SPECIAL NOTE

Wet or damaged insulation, or insulation with low compressive strength, should be removed around drain flange seating area and replaced with insulation having a minimum compressive value of 25 PSI.



TRUFAST® roofing solutions are manufactured under stringent engineering, quality, and environmental standards at the ALTENLOH, BRINCK & CO. U.S., INC. complex in Bryan, OH. ISO 9001:2008 certified.