

PRODUCT DESCRIPTION

TRUFAST® VERSA-FAST® METAL PLATES are used to mechanically attach insulation, cover boards and base sheets to lightweight insulating concrete (LWIC) and gypsum decks. The VERSA-FAST Metal Plate is a circular design with one center fastener placement hole and eight equally spaced fastener placement holes around the perimeter of the plate allowing for maximum versatility. Required pullout values can be achieved by installing multiple VERSA-FAST Fasteners in one VERSA-FAST Metal Plate.

APPROPRIATE ACCESSORIES

Use with TRUFAST® VERSA-FAST® Fasteners.

CODE APPROVALS & LISTINGS



MATERIAL SPECIFICATIONS

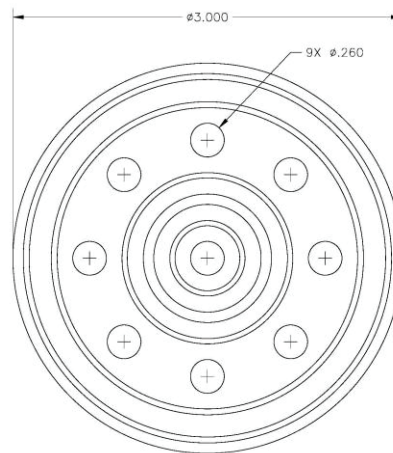
LEED® Eligible Recycled Content: 20%

PRODUCT SELECTION



VERSA-FAST® Metal Plate

Thickness: 0.017"
 Diameter: 3"
 Hole Diameter: 0.260"
 Coating: AZ-50 Galvalume



Size & Type	Part No.	Pkg. Qty.	Pkg. Wt.	Pallet Qty.
3" VERSA-FAST® Metal Plate	MPVF-3000	1000/Bucket	34 lbs.	40,000

INSTALLATION GUIDELINES

VERSA-FAST® Metal Plates are designed for use with VERSA-FAST® Fasteners. Depending on site specific pullout values, more than one VERSA-FAST Fastener may be required to achieve the desired pullout resistance. Multiple fasteners may be installed in the VERSA-FAST Plate increasing the amount of force required to pull the plate/fastener assembly out of the approved deck. Contact Trufast Technical Services for assistance.

DISCLAIMER

The performance specifications published in this TRUFAST® product literature are based on controlled laboratory tests and are intended as a guideline only. They are not guaranteed in any way by the ALTENLOH, BRINCK & CO. U.S., INC. (the supplier), since building design, engineering, and construction, including workmanship and materials, are beyond the control of the supplier. The supplier recommends that a pull test be conducted to verify the substrate provides adequate pullout values.

TRUFAST® VERSA-FAST® Metal Plates are supplied by the ALTENLOH, BRINCK & CO. U.S., INC, and are sold through leading roofing and building material distributors across the U.S. and Canada.



ALTENLOH, BRINCK & CO. U.S., INC.

02105 Williams County Rd. 12-C • Bryan, OH 43506
Phone: 419-636-6715 or 800-443-9602 • Fax: 419-636-1784
Email: sales@trufast.com • www.trufast.com