

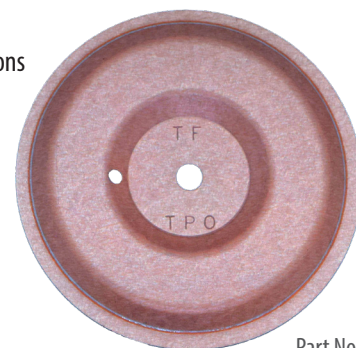
APPLICATION

The TRUFAST® Induction Weld (IW) Plates are designed to attach insulation or coverboards to the deck while providing a non-penetrating mechanical attachment of single-ply membranes utilizing an induction welded bond to the TRUFAST IW Plate. TRUFAST IW Plates are approximately 3-3/8" (85.4 mm) diameter. Plates are approved for use with steel, wood or structural concrete roof decks.

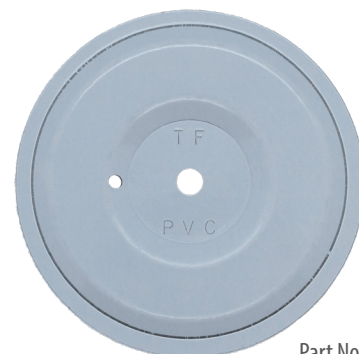
The Trufast IW plates can be installed using TRUFAST #14 HD, TRUFAST #15 EHD, TRUFAST Fluted Concrete Nail, and TRUFAST #12 Purlin Fasteners. Refer to applicable code bodies or membrane manufacturers for specific system ratings and requirements.

PRODUCT FEATURES

- 500 plates stacked in a weather resistant pail with handle for ease of storage, shipping, and handling
- TRUFAST IW plates are stamped from 22 ga. steel with a proprietary coating applied for TPO and PVC applications
- Reduces flutter
- Less seams required
- FM approved (meets FM 4470 requirements)
- Engineered for compatibility with most common commercial roofing induction welding equipment
- Manufactured in the USA
- Easily identified with stamped lettering – “TF” and the plate type (“TPO” or “PVC”)
- Has a wide, flat welding surface for optimal membrane adhesion



Part No.
MPW-TPO-3375



Part No.
MPW-PVC-3375

PRODUCT SELECTION

Part Number	Color	Pkg. Qty.	Pkg. Wt.	Pallet Qty.
MPW-TPO-3375	Orange/Grey	500/bucket	40.6 lbs.	20,000
MPW-PVC-3375	White/Blue	500/bucket	39.3 lbs.	20,000

MATERIAL SPECIFICATIONS

Material: 22 ga. AZ-50 Galvalume® Steel

LEED® Eligible Recycled Content: 49%

CODE APPROVALS & LISTINGS



FM Global



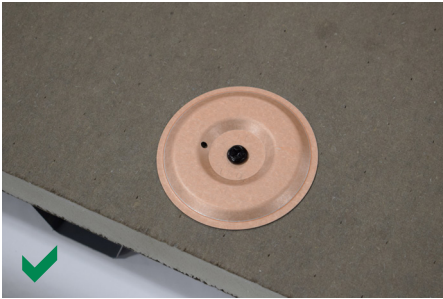
Coming soon: Florida Building Codes approval.

Reference Roof Nav (www.roofnav.com) or the membrane manufacturer for the most up to date approvals.

ATTENTION: TRUFAST® PVC and TPO IW Plates must be protected from prolonged UV (ultra violet) sun exposure and surface contaminants. Keep buckets covered when not retrieving plates. All installed plates must be covered with membrane by the end of each workday.

Induction weld systems can be used with EPS and XPS insulation, as long as an adequate barrier is used between the plate and insulation. The barrier offers protection to the EPS/XPS from the induction welder, even in the absence of a cover board, without compromising the thermal bond with the membrane. It also reduces the risk of recessed areas that can result in ponding water.

INSTALLATION GUIDELINES



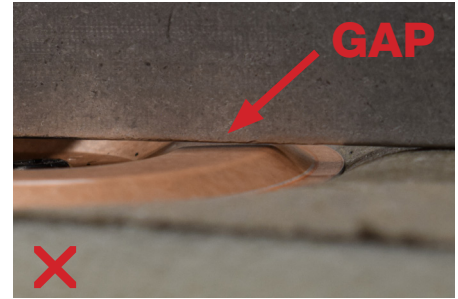
TOP VIEW:

Correctly installed plate and fastener.



FLUSH VIEW:

Correctly installed plate and fastener.
Minimum 3/4" fastener penetration
through roof deck.
Straight edge is shown for reference only.



FLUSH VIEW:

Incorrectly installed, overdriven
plate and fastener.
Straight edge is shown for reference only.

DISCLAIMER

The performance specifications published in this TRUFAST® product literature are based on controlled laboratory tests and are intended as a guideline only. They are not guaranteed in any way by ALTENLOH, BRINCK & CO. US, INC., since building design, engineering, and construction, including workmanship and materials, are beyond the control of the manufacturer. The manufacturer recommends that pull-out tests be conducted to verify the substrate provides adequate pull-out values.